

# Come Grow With Us



You have choices on a job, but wouldn't you rather have a career?  
Caring for trees and improving the environment is what we specialize in.



Join our Team of Specialists



# **“Doing the Right Thing for People, Trees, and the Environment.”**

*We are always hiring good people.*

---

## **Positions Available:**

Certified Arborists

Sales

Project Managers

Horticulturalist

Tree Climber

Crew Foreman

Groundsperson

Plant Health Care Technicians

Administrative

---



RTEC Treecare

2828 Mary Street | Falls Church, VA 22042

703.573.3029

[www.RTECtreecare.com](http://www.RTECtreecare.com)





# Innovative & Forward Thinking

RTEC Treecare provides professional tree care and environmental services for residential, commercial, and government properties in the Washington DC Metro Area and throughout the US.

Our goal is to provide flawless care to trees and the environment.

RTEC utilizes the latest technology and best practices to deliver guaranteed services. We provide safe and quality work, efficiently.

We provide all team members the opportunity to advance their careers with knowledge, training, and certification.

We are continuously improving our techniques and services and are dedicated to utilizing the latest technological advances.

Our goal is to grow and always move forward.



# Benefits Include:

Paid Time Off (Vacation & Sick Leave)

Holidays

Retirement Plans

Health Insurance

Training Programs

Relocation Package

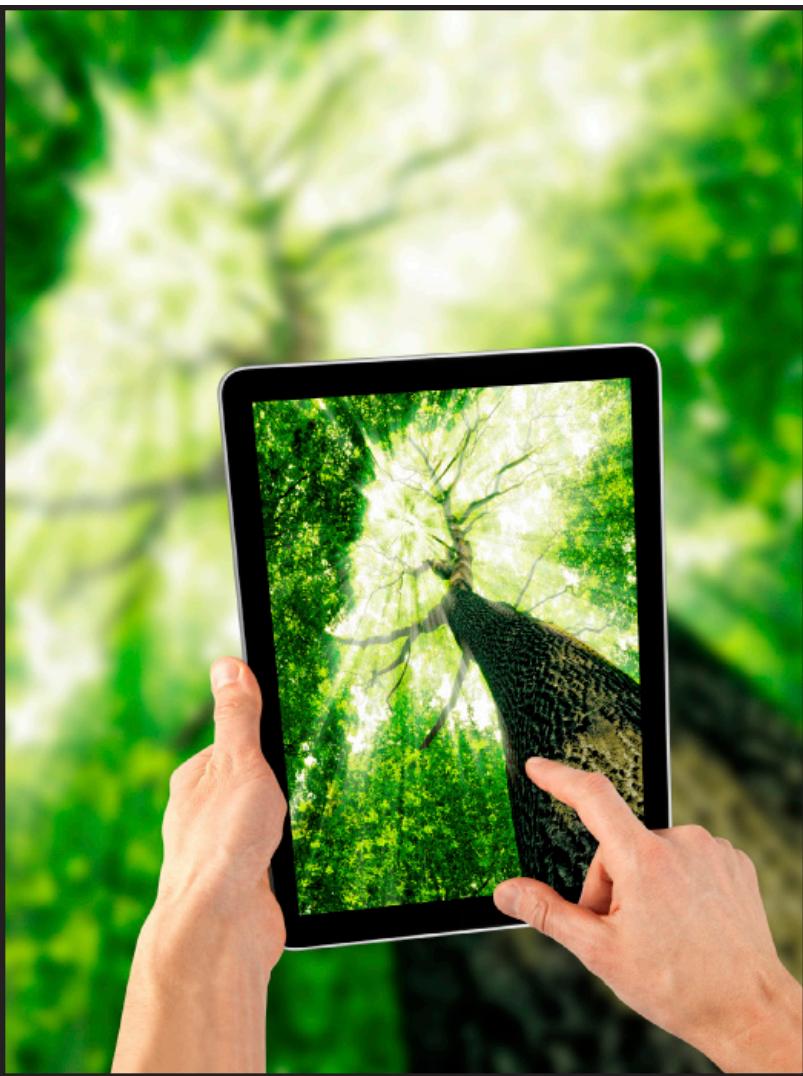
Advancement within the Organization

---

Email your resume to: [Jobs@RTECtreecare.com](mailto:Jobs@RTECtreecare.com)



# Why RTEC Treecare?



## **Our Awards & Recognition**

RTEC received 11 awards for Excellence in Arboriculture from the Tree Care Industry Association but that's not all.

RTEC has also been recognized by with Communication awards and two Small Business Achievement Awards from the Department of Homeland Securities for excellent service.

## **Growth & Advancement**

RTEC refuses to be confined by the status quo. We appreciate advancement and are continuously adapting to and pioneering new industry standards, utilizing innovative technology, and experimenting with new process and techniques. We look to our team members to provide us with valuable insights and suggestions about these advancements. Here at RTEC each team member has the opportunity to grow and contribute to their own success as well as the company's.

## **Safety**

Safety of our team members, our clients, and the public is our number one priority. We hold safety training programs on a regular basis and provide opportunities for team members to become Certified Tree Care Safety Professional.

## **Training & Education**

Flawless execution of the tree care services we offer is our goal. To help our team members perform at this level we have formalized plans and programs for training and education. These plans help foster education at all levels of our organization.

## **Hands On**

RTEC has a hands on approach to all our work. Our team members are trained through hands on experience in many different types of services. This type of education ensures that team members are prepared for what they will encounter in the field.

## Want To Start Your Career Today?

Email Your Resume To: [Jobs@RTECtreecare.com](mailto:Jobs@RTECtreecare.com)